

Safety profile

Icon 10CS has an excellent human and environmental safety profile.

Icon 10CS presents no significant risk to spray operators, householders or the environment when used as directed.

Icon 10CS is in a low WHO hazard category – class 3 – ‘unlikely to present acute hazard in normal use’.

WHO Specification

Lambda-cyhalothrin and its formulations have successfully completed the joint FAO/ WHO specification scheme under new procedure:

Lambda-cyhalothrin technical ai: WHO Specification 463 / TC (2015)

Lambda-cyhalothrin CS: WHO Specification 463 /CS (2015)

Very favorable low toxicity profile of Icon 10CS

Acute oral medial lethal dose, rat (mg/kg)	LD ₅₀ : > 5000	Very low toxicity
Acute dermal medial lethal dose, rat (mg/kg)	LD ₅₀ : > 5000	No concern
Eye irritation,	Mild	Very low toxicity
Skin irritation	Slight	No concern

▶ Long-lasting residual control on a wide range of surfaces

▶ Potential for just one application per year covering both raining seasons

▶ Patented unit dose sachets — no measuring — accurate dosing

FOR LIFE UNINTERRUPTED™

syngenta.

USE INSECTICIDES SAFELY. ALWAYS READ THE LABEL AND PRODUCT INFORMATION BEFORE USE. ICON® is a trademark of a Syngenta Group Company.
© Syngenta Crop Protection AG, Basel, Switzerland. All rights reserved. January 2016. Email: vector.control@syngenta.com Web: www.syngenta.com

PROFESSIONAL PEST MANAGEMENT

**LONG-LASTING
INDOOR
RESIDUAL
SPRAYING**

Icon® 10CS
Long lasting residual insecticide

syngenta.

Icon® 10CS
Long lasting residual insecticide

syngenta.

Important: Always read and follow label instructions before buying or using these products. Syngenta and its affiliates warrant that their products conform to the chemical description set forth on the products' labels. NO OTHER WARRANTIES, WHETHER EXPRESS OR IMPLIED, INCLUDING WARRANTIES OF MERCHANTABILITY AND OF FITNESS FOR A PARTICULAR PURPOSE, SHALL APPLY TO SYNGENTA PRODUCTS. Syngenta and its affiliates neither assume nor authorize any representative or other person to assume for them any obligation or liability other than such as is expressly set forth herein. UNDER NO CIRCUMSTANCES SHALL SYNGENTA AND ITS AFFILIATES BE LIABLE FOR INCIDENTAL OR CONSEQUENTIAL DAMAGES RESULTING FROM THE USE OR HANDLING OF THEIR PRODUCTS. No statements or recommendations contained herein are to be construed as inducements to infringe any relevant patent now or hereafter in existence. ©2013 Syngenta. Syngenta Crop Protection AG, Basel, Switzerland

SYNGENTA AND MALARIA

Syngenta's corporate goals include those dedicated to the improvement of health and quality of life.

We believe that people around the world deserve to live their lives uninterrupted by malaria.

Therefore, we are investing in the advanced tools required to meet both today's and tomorrow's challenges in malaria mosquito control.

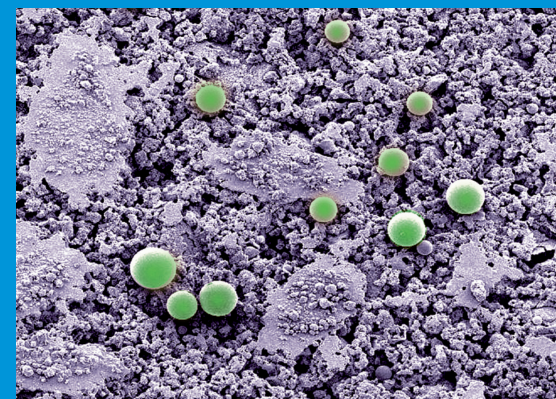
ICON[®]10CS

Icon 10CS is a technically advanced capsule suspension (CS) formulation of the second-generation pyrethroid, lambda-cyhalothrin.

It has been specifically designed for use in indoor residual spraying (IRS) and provides greater than 9 months control of mosquitoes and other public health pests.

Benefits for malaria control programs

- ▶ Highly flexible tool for vector control as a residual treatment, space spray, or larvicide
- ▶ Long-lasting residual control
- ▶ Cost-effective and proven efficacy in malaria control programs across Africa, Asia and Latin America
- ▶ Excellent household acceptance with low odor and no staining
- ▶ Patented unit dose pack enables accurate dosing and operator safety
- ▶ Excellent safety profile



Icon 10CS microcapsules on concrete after application

Performance

Large scale field trials in Uganda (Figure 1), Malawi (Figure 2) and Tanzania (Figure 3) demonstrate the long-lasting performance of ICON 10CS.

ICON 10CS consistently provides more than 9 months residual control of *Anopheles* spp. on various typical household surfaces including mud, thatch, plaster and painted plaster.

Figure 1. Long-lasting control of *Anopheles gambiae* with Icon 10CS in Uganda (Kolaczinski et al, 2007)

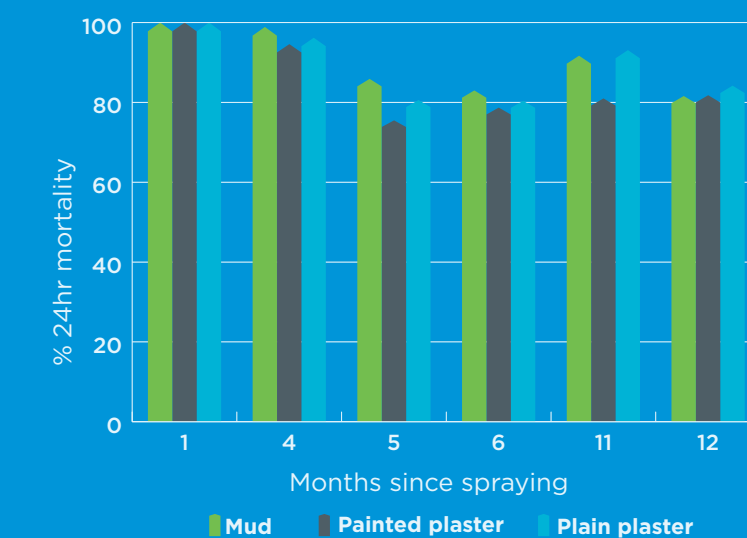


Figure 2. Long-lasting residual control of *Anopheles spp* in Malawi (Chakaniza et al, 2009)

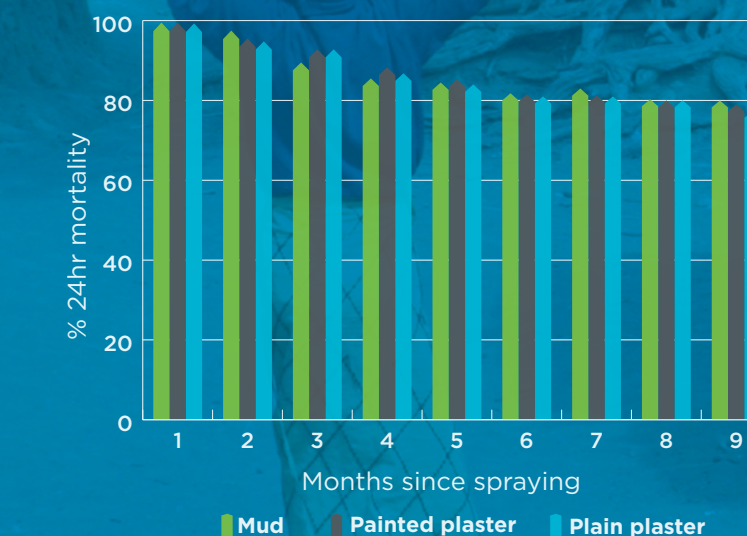


Figure 3. Long-lasting control of *Anopheles spp* in Tanzania (Curtis et al, 1998)

